

Building Connections for Biodiversity in the Central Tablelands iNaturalist citizen science project review FOR 2021-2022.

Hi all,

It has been an absolute pleasure hosting our first citizen science project as part of our Landcare and BCT partnership! Thank you to everyone involved for this 12 month pilot project.

We recorded more than 4000 observations and 900 species from a team of 26 observers, with these observations holding 72% research grade. Of the species recorded the top three species were Plants (37.98%), Insects (29.72%), and Birds (12.12%). But we also recorded Fungi (8.8%), Arachnids (4.29%), Reptiles (2.25%), and Mammals (1.82%).

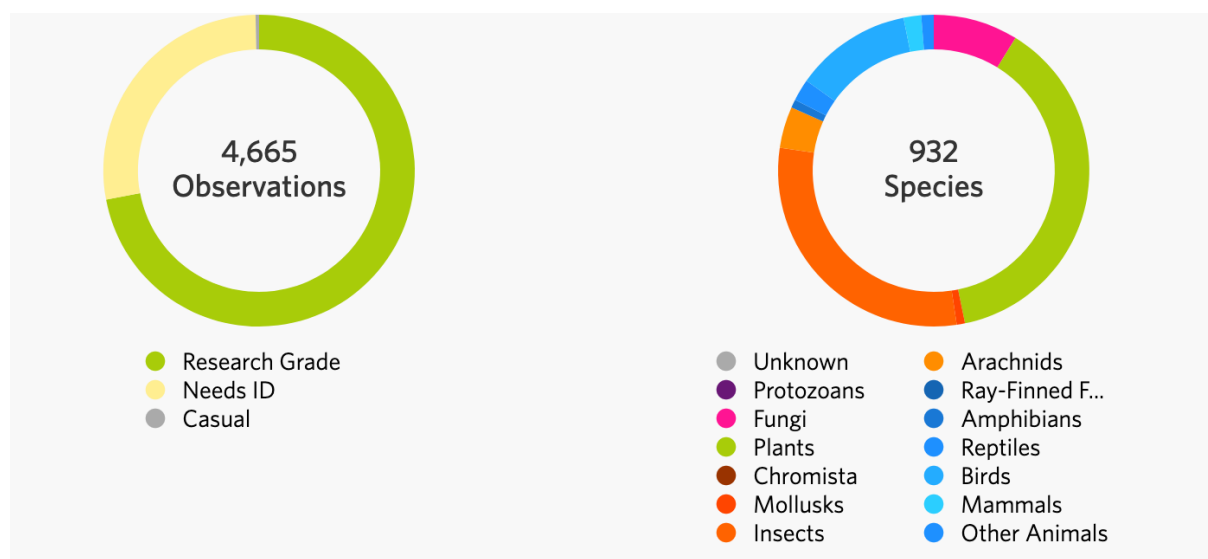


Figure 1: total observations and species recorded for iNat "Building Connections" project

The top ten recorded species are illustrated below (Figure 3).

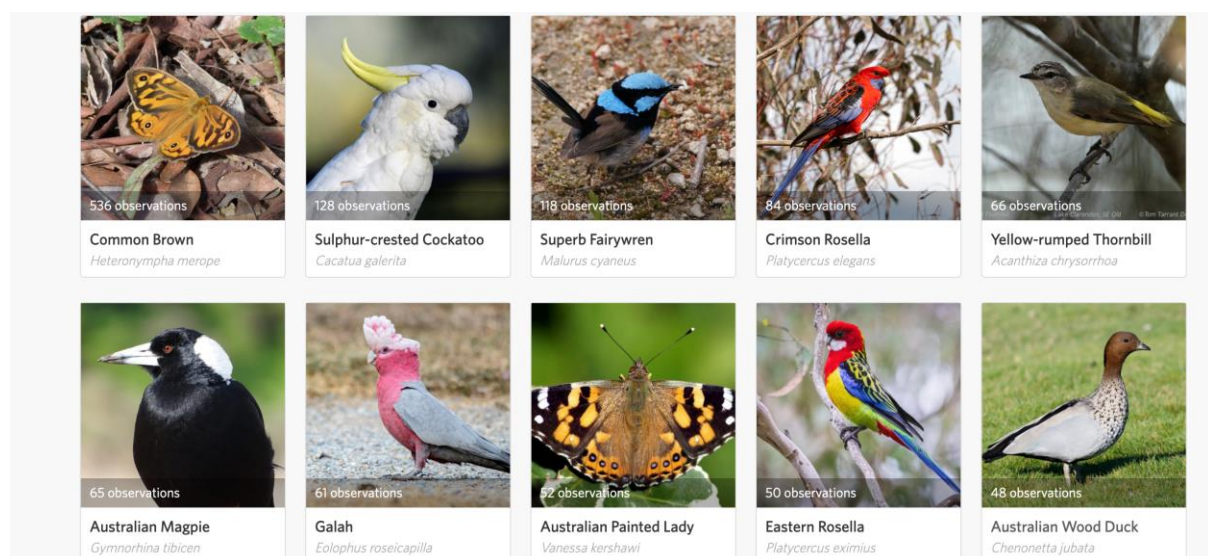


Figure 2 Top 10 recorded species in CT iNat project

Here are our top contributors, and a massive thanks to everyone who has contributed observations to the project site!











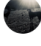

Most Observations			Most Species		
 1st	lizardview	3,481	 1st	lizardview	468
	tracee01	309		tracee01	175
	jessbrian	268		doof	124
	doof	155		jessbrian	116
	coreyatz	103		coreyatz	69
	meggsyoo	69		lk64	32

Figure 3: Top Contributors for the CT iNat project

These observations have been filtered to only include those within the associated Local Government Areas (LGAs). The map below (Figure 2) highlights where the concentration of our observations occurred. Initially the site did not have these parameters, so final numbers have been adjusted for increased accuracy.

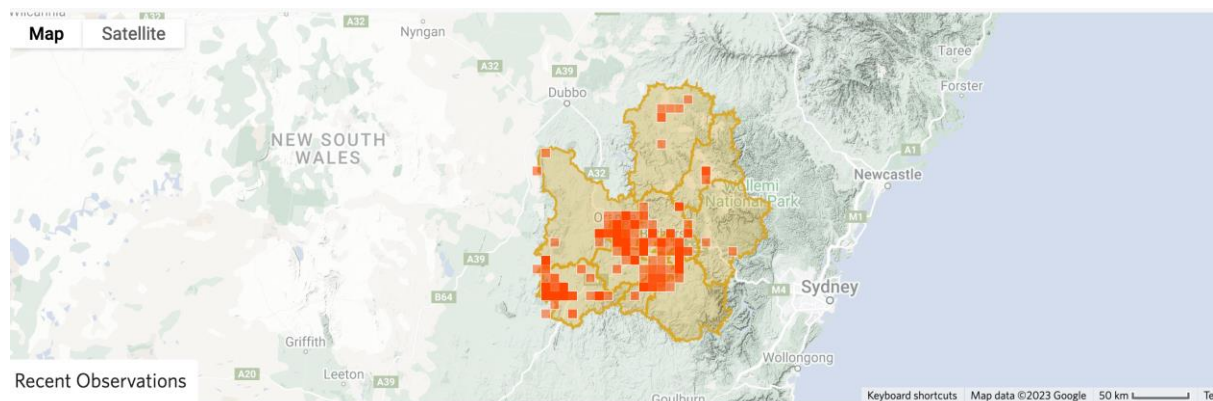


Figure 4: Central Tablelands Landcare region project parameters by LGA

The project site has now been extended to 2025, and will retain project boundary sites for the Central Tablelands region. It is hoped that we can really target our efforts in the coming years to focus on particular local geographical areas of interest, or align with other biodiversity species counts such as Frog ID week, bee counts, bird counts, The Great Southern Bioblitz, and other focus areas of interest to our community! If you have suggestions for project focus, please feel free to reach out. Depending on interest and needs of our community we might even be able to offer some photography skills workshops, and some more info sessions on how to use platforms such as iNaturalist.

If you haven't yet joined, but are interested in taking part follow this link to our iNat community site: <https://inaturalist.ala.org.au/projects/building-connections-for-biodiversity-in-the-central-tablelands-nsw>

Thanks everyone, it has been a real treat getting to know you, and hope that you continue to stay connected in this community. Your engagement is incredibly valued. It has been an awesome project to manage, and I hope we can keep building on our connections across the Central Tablelands to inspire, motivate and support each other in our various commitments to biodiversity and conservation land management.

Cheers for now,
Corey Tatz